



Build THE Change

supported by The LEGO Foundation



Human Impact: Saving Today's Dinosaurs Course Pack for Educators

In partnership with



[Let's go! →](#)

Introduction

Hi there,

In this document you'll find everything you need to run **Human Impact: Saving Today's Dinosaurs**, a [Build the Change](#) course from the LEGO Group and the Natural History Museum, London and at Tring. There are materials for five 45-minute Learning Through Play sessions plus a "Showcase Day" show-and-tell event to share the creations and ideas from your young learners.

In this course, your students will explore how humans impact the planet, using the example of our impact on birds, "today's dinosaurs." They will learn that humans can have both negative and positive effects on nature and create their own positive impact by coming up with imaginative solutions to related real-world challenges.

At the LEGO Group, we are committed to becoming global leaders in Learning through Play. This means equipping the builders of tomorrow with the knowledge and skills they need to become engaged and successful 21st century citizens — skills including creativity, design thinking, communication + collaboration, and the confidence to know that their voices and opinions matter.

The course is organized around the latest scientific understanding of human impact and threats to biodiversity and is informed by our expert content partner the Natural History Museum in London and Tring, UK. Sessions focus on three key areas of negative human impact, and the solutions humans are working on to address these challenges:

1. Habitat Loss
2. Water Pollution
3. Light and Noise Pollution.

Note that the course directly impacts several areas identified in the UN's [Sustainable Development Goals](#) — the framework being used by schools around the world.

Learning through Play is at the heart of every session, with playful hands-on activities exploring the course's topics. They are designed to work with any creative materials you have available. LEGO® bricks are not required but can be used if you have some lying around 😊.

Thank you,

The LEGO Group
In partnership with
the Natural History Museum, London and at Tring



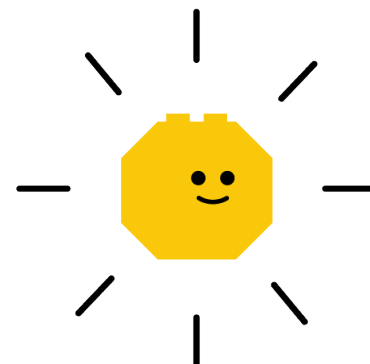
Table of Contents

Human Impact: Saving Today's Dinosaurs

What's in the Course Pack?

1. Lesson plans

and classroom presentations for five 45-minute sessions, plus a special "Showcase Day" event to let learners share the ideas they've created during the course.

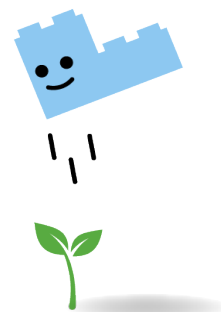


2. Printable materials

A **course journal** for learners to record their thoughts and learnings across the sessions, and **description cards** to display alongside their awesome creations.

3. Uploading your learners' ideas

Photos and descriptions of the creative ideas from the sessions can be uploaded to public galleries on LEGO.com for the whole world to see.



4. More materials for educators

- [Background information on birds, today's dinosaurs](#) from the Natural History Museum at London and Tring.
- Tips for tailoring the sessions for [curricula](#) (and alignment with the UN's sustainable development goals) or [age / ability](#).
- [Facilitation tips and tricks](#) for getting the best ideas out of kids.

5. More about us

- [The Natural History Museum, London and at Tring](#) on past, present, and dedication to a future with better human impact.
- [The LEGO Group and the LEGO Foundation](#) on our commitment to Learning through Play and sustainability.
- More about the LEGO Group's global [Build the Change](#) program.

Build the Change lesson plans

In the following section, you'll find suggested plans for a number of Build the Change sessions, each of which is about **45 minutes long**. Together these sessions add up to the *Human Impact: Saving Today's Dinosaurs* classroom course.

Click on the bricks or the links for each session's lesson plan.

KEY SKILLS

Creative problem solving & design thinking

Speaking & listening

Teamwork & collaboration

Project-based learning

STEM/STEAM

Citizenship

1. Introductory Session



[Introduction to Human Impact: Meet Today's Dinosaurs](#)

2. Stories of Change / Case Study Sessions



[2A: Tackling Habitat Loss](#)



[2B: Tackling Water Pollution](#)



[2C: Tackling Light and Noise Pollution](#)

3. 'The Big Challenge' Session



[Welcoming Migrating Birds](#)

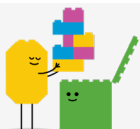
4. Sharing your class's ideas



[Showcase Day](#)



[Uploading ideas to our online gallery](#)



Feel free to extend, combine, and space out these sessions to produce the timings + course length that fits your learning environment and course needs.

[← Back to table of contents](#)



PRINTABLE MATERIALS

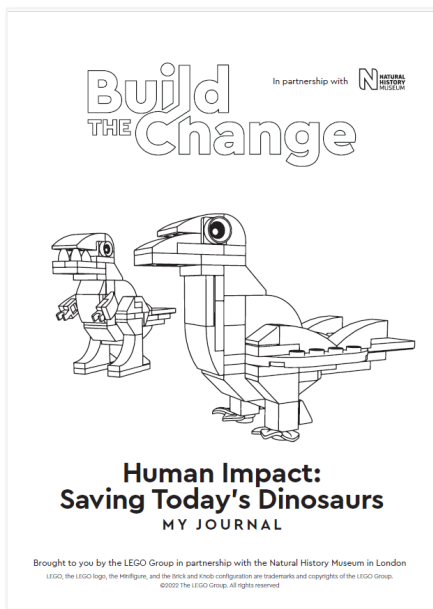
COURSE JOURNAL

Download PDF:

http://www.LEGO.com/cdn/cs/sustainability/assets/blt46c9f2b09eb3a32f/course_journal_HI.pdf

Download PDF: 2-SIDED PRINT AND FOLD VERSION

http://www.LEGO.com/cdn/cs/sustainability/assets/blt9afabb8a32461e9f/course_journal_HI-printandfold.pdf



Encourage your learners to print this blank book for recording their reflections and learnings throughout the course.

Children can also use it to write down their answers to the quizzes at the end of each session.

IDEA CARDS

Download Printable PDF

http://www.LEGO.com/cdn/cs/sustainability/assets/blt05a1a38185a2557e/BtC_Idea_description_card.pdf

These can be printed and placed next to learners' creations for when they are being displayed, for example during [Showcase Day](#).



[← Back to table of contents](#)



Uploading the Ideas

Human Impact: Saving Today's Dinosaurs

Don't forget to upload your kids' creations to our [Saving Today's Dinosaurs gallery](#) on LEGO.com!

Just scan the QR code above with a phone camera to get started or use this URL:
<https://www.lego.com/sustainability/buildthechange/challenges/HI-saving-todays-dinosaurs/upload?CMP=EMC-LCE>

Once they're moderated, the ideas will appear here:

<https://www.lego.com/sustainability/buildthechange/challenges/HI-saving-todays-dinosaurs/gallery?CMP=EMC-LCE>

Scanning the "Uploader" QR code with your phone camera will bring up a webpage where you can photograph your children's builds, add a short description, and upload them to our galleries on LEGO.com.



Idea Uploader

**Saving Today's
Dinosaurs:**
Turning our
human impact on
birds positive.

NOTE: You'll need to create and/or sign in with a [LEGO ID Account](#) so we can contact you with any queries about your submission.

While we can't wait to see what your learners come up with, please be aware that images may be rejected by our moderation system, especially if they contain personally identifying information, e.g.

- Faces and/or people in the image
- Information about the creator beyond first name and age – e.g. last names, names of schools or geographic areas, etc.
- Email addresses, phone numbers, etc.

Images may also be rejected if they are rotated, very blurry, or contain inappropriate content.

[← Back to table of contents](#)

About the Natural History Museum, London and at Tring

The Natural History Museum in London first opened to the public in 1881 and is a world-class visitor attraction and leading science research centre. We use our unique collections and unrivalled expertise to tackle the biggest challenges facing the world today. We care for more than 80 million objects spanning billions of years, including one of the largest and most comprehensive bird collections in the world.

Our mission is to create advocates for the planet, and one of our strategic priorities is to engage and involve the widest possible audience. Caring, understanding, and speaking up for the natural world has never been more important. We seek to empower people to make informed choices and act on behalf of nature to secure the best possible future for the planet. Through our learning programme we want to inspire, inform and empower the next generation of advocates for the planet, building identity, confidence and literacy in science as well as long lasting relationships with the natural world.

With over one million specimens representing 95% of all known bird species, housed mostly at our sister site in Tring, Hertfordshire, the Museum scientists study birds from across the entire planet, as well as across thousands of years, paying particular attention to topics like evolution, conservation and interactions between humans and birds.

Studying the genetic makeup and characteristics of these birds can help inform present and future research of what we can do to coexist with nature, allowing both people and planet to thrive. Inspiring future generations to be advocates for the planet through education is vital in tackling climate and biodiversity issues.

The LEGO Group and the Natural History Museum have been working in partnership for a number of years, reaching thousands of people through our co-created programmes. Our joint goal is to help the builders of tomorrow learn about the natural world through playful and creative experiences.

<https://www.nhm.ac.uk/>



[← Back to table of contents](#)

The LEGO Group on Learning through Play and Sustainability

OUR COMMITMENT TO LEARNING THROUGH PLAY

The LEGO Group and the LEGO Foundation are committed to becoming a global force for learning through play. We aim to redefine play and reimagine learning with hands-on learning experiences like Build the Change, where children are actively engaged through a meaningful and enjoyable experience, testing and trying out things with others. Success for us is seeing more and more children around the world become creative, engaged, and life-long learners.

Educators can use Learning through Play to support students' depth of knowledge and understanding, with the application of this knowledge into practical skills and nurturing a lifelong motivation to learn new things.

On the [LEGO Foundation website](#), you can find more information and access the [LEGO Foundation knowledge base](#) and in particular the white papers on [What we mean by Learning through Play](#) and [Learning through Play at school](#).

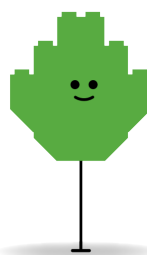


OUR COMMITMENT TO SUSTAINABILITY

We're playing our part in building a sustainable future and creating a brighter world for our children to inherit. We're joining forces with children and parents, educators, our employees, partners, charities and experts to have a lasting impact and inspire the children of today to become the builders of tomorrow.

We are proud of the journey we are on and recognize that there is much more to do and learn. We will continue to do everything we can to achieve our ambitions.

On our [sustainability website](#) you can find more information about our initiatives, ambitions and progress.



[← Back to table of contents](#)

What is Build the Change?

Build the Change is the LEGO Group's flagship sustainability education program. Deceptively simple and effective, it has been tested with kids at events around the world for over a decade.

Immerse → Create → Share



Learn about a real-world planet and people challenge.



Devise your own brilliant solution.



Share it with others.



[← Back to table of contents](#)